

# *Premium Products*

---

**BETWEEN**  
**₹400 - ₹600**

## 3D wall clock (5R size) - W 04 (merges with wall colour)

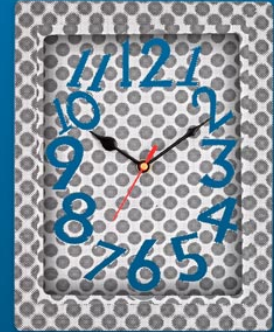


- 3D depth illusion now for your wall!
- Gives the illusion of being 5-6 inches inside the wall, while being super thin



Laser cut clear numbers; takes the color/design on the background and merges with your wall

- Totally unique concept, for the first time in India
- Comes in a special packing for easy transport



Available in 3 attractive colors



# Drift mate

## TRAVEL NECK REST PILLOW

Product Code : S 62



Ultra Soft Fabric:  
Gentle For Skin

Removable Cover  
easy to clean



**BOUNCE BACK  
MEMORY FOAM**



Ergonomic Wrap  
Around Design



Premium  
3 Sec. Bounce Back  
Memory Foam



Soft feel  
fabric  
Outer Cover

### Ultimate Comfort for Your Journeys

Perfect Neck Support for Plane, Train, Car or Bus Travel

**360-DEGREE SUPPORT**



# LAPTOP SLEEVE

## WITH OUTSIDE POCKET

Product Code : S 59



Can hold your laptop, notebooks, books, chargers, pens, etc



Holds a full 15" laptop and keeps it safe



Can be attached to trolleys for easy travelling

# LARGE TRAVEL SLING BAG

## WITH SPACE FOR 13 INCH TABLET

:Product Code : S 57



Specifically designed for iPad

Middle compartment,  
front pocket, and  
back pocket  
for storage



High quality carabiner  
and accessories for durability

Very attractive and perfect  
for college, school, travel  
and outdoor activities

Perfect companion  
for people on the move



Adjustable  
shoulder  
strap for  
comfort



# MINIMALISTIC SLING LAPTOP BAG

## WITH BROWN HIGHLIGHT



  
Castillo  
MILANO

Lightweight  
and designed  
for modern  
professionals

One main compartment  
with another padded  
15" laptop compartment



Adjustable strap  
for comfortable  
and convenient wear

Outside pockets  
for organized and  
easy access to  
everyday essentials

Crafted with high  
quality materials  
for durability  
and protection

Brown highlight  
adds a refined  
touch to  
minimalist design

Product Code : S 48

## 3 LAYER TOILETRY KIT



Product Code : S 44

- Stores products for all your daily needs and folds into a compact pouch
- Can be hung when open, so everything is easily accessible
- Clear pockets so you can see whats inside
- Partitioned pockets for different kinds of things



Extra pocket at the back for easy access to products

Great Branding area



  
Castillo  
MILANO

# BROWN CHEQUED TWEED PASSPORT HOLDER WITH SIM CARD SAFE CASE & SIM CARD JACKETS



- Passport holder made of Soft Tweed material
- Handy design can be stored in pocket, or carried in hands easily
- Store up to 4 credit/debit cards along with net pocket to keep track of things inside
- Power locked Sim card case holds your valuable SIM & SD cards safe in place
- 2 Pockets for cash and pen slot in middle
- Comes packed in a black gift box
- Magnetic lock to keep your contents safe



Includes sim card jackets for using with different country SIMs and iPhone ejector pin

Carry your sim cards, passport, credit cards, boarding pass, visa, cash, pen, photographs, etc.

Includes sim card jackets for using with different country SIMs & iPhone ejector pin



Product Code : S 32

**Complete solution for International travellers!**

# GRAY CANVAS PASSPORT HOLDER WITH SIM CARD SAFE CASE & SIM CARD JACKETS

Castillo  
MILANO

Product Code : S 37



- Handy design can be stored in pocket, or carried in hands easily
- Store up to 4 credit/debit cards alongwith net pocket to keep track of things inside
- Power locked Sim card case holds your valuable SIM & SD cards safe in place
- 2 Pockets for cash and pen slot in middle
- Comes packed in a black gift box
- Magnetic lock to keep your contents safe



Includes sim card jackets for using with different country SIMs and iPhone ejector pin

Carry your sim cards, passport, credit cards, boarding pass, visa, cash, pen, photographs, etc.



Includes sim card jackets for using with different country SIMs & iPhone ejector pin

**Complete solution for International travellers!**

# MINI LAPTOP BAG

LAPTOP SLEEVE WITH  
INNER COMPARTMENTS



Minimalistic design,  
can be used a  
laptop sleeve

Outside easy  
access pocket



Convertible to  
sling bag

Can hold your  
laptop, notebooks,  
books, chargers,  
pens, etc



Mini laptop bag /  
sleeve with thoughtful  
construction

Holds a full  
15" laptop with  
padded compartment

Product Code : S 28

# DARK CHEQUED TWEED PASSPORT HOLDER WITH SIM CARD SAFE CASE & SIM CARD JACKETS

Products Code : S 31

Includes sim card jackets for using with different country SIMs & iPhone ejector pin

Carry your sim cards, passport, credit cards, boarding pass, visa, cash, pen, photographs, etc all together



**Complete solution for International travellers!**

# Eco-Friendly Cork Cheque Book Holder

/ Passport Holder With Sim Card Safe Case & Sim Card Jackets - S19

- Complete solution to keep your cheque books and travel documents organized!
- Sim card case Securely holds your valuable SIM & SD cards safe in place even when the drawer is open, preventing spills!
- Includes sim card jackets for using with different country SIMs & iPhone ejector pin
- Extra long design



Carry your sim cards, passport, credit cards, boarding pass, visa, cash, pen, photographs, etc all together

Made of Eco-friendly Cork material which is bio-degradable & sustainable



# NOTEBOOK SET OF 2

## A5 NOTEBOOK MAGNETIC FLAP CLOSURE WITH METAL PEN AND FIDGET BALL

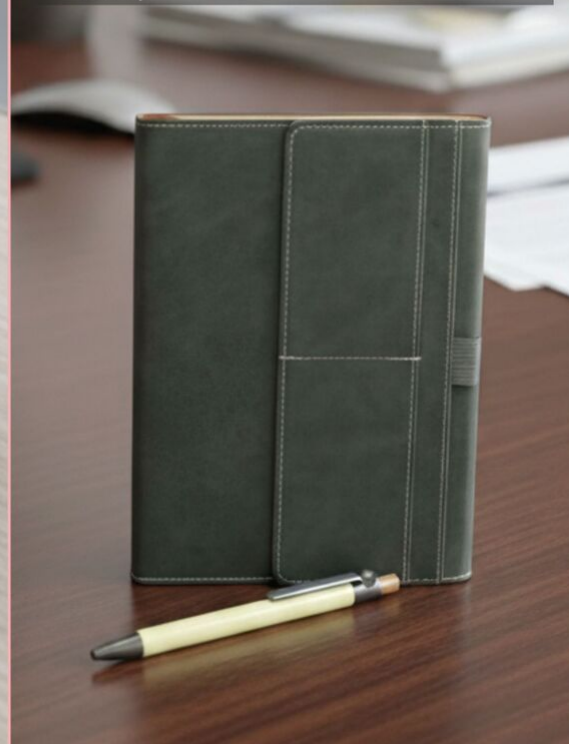
Product Code : Q 234



Available in 2 Colors

■ GRAY ■ GREEN

- Foldbook Stash is a 3 fold notebook with pockets on outer body
- Features a bookmark ribbon & Pen slot for easy note taking
- Contains total 192 inner pages
- Made of high quality 80gsm paper
- Stylish and functional design with 3 fold cover
- Metal pen with fidget ball
- Works as a fidgeting tool, helpful in managing anxiety



# EcoPouch Set of 4

3 Fold Cork Notebook, Cork 4 refill pen, Cork strap metal keychain,  
Cork Smiley Notepad in Multipurpose Canvas Pouch

Product Code : Q 224



1. Smily Cork notepad  
with Sticky notepad and strips

2. Rectangle Hanging Metal  
Keychain with Cork Strap



3. Cork Magnetic Envelope style  
Notebook with recycled pages



4. Cork 4 refill pen



Multipurpose Canvas Pouch  
with Eco Box Packing

# EcoPouch Set of 4

Cork A5 size Notebook, Cork Visiting Card Holder, Keychain with Magnetic Cable, Cork 4 refill pen in Multipurpose Canvas Pouch

Product Code : Q 225



1. Stainless Steel Magnetic Visiting Card holder



2. Magnetic 3 in 1 charging cable with Keychain



3. PU Cork Notebook with Elastic Fastener



4. Cork 4 refill pen



Multipurpose Canvas Pouch with Eco Box Packing

# EcoPouch Set of 4

Cork A5 size Notebook, Cork Visiting Card Holder, Keychain  
with Magnetic Cable, Cork 4 refill pen in Multipurpose Canvas Pouch

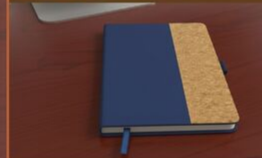
Product Code : Q 226



1. Stainless Steel Magnetic  
Visiting Card holder



2. Magnetic 3 in 1 charging  
cable with Keychain



3. PU Cork Notebook  
with Elastic Fastener



4. Cork 4 refill pen



Multipurpose Canvas Pouch  
with Eco Box Packing

# EcoPouch Set of 4

EcoPouch Set of 4: Cork A5 size Notebook, Folding Compact Scissors, Car Charger with Keychain, Screwdriver Pen in Multipurpose Canvas Pouch

Product Code : Q 228



1. Car charger with keychain and charging cable



2. Folding Compact Scissors



3. PU Cork Notebook with Elastic Fastener



4. Pen with 2 way screwdriver



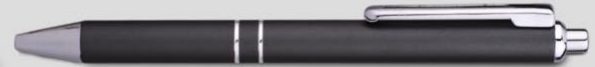
Multipurpose Canvas Pouch with Eco Box Packing

# 2 IN 1 DARK SET

## 3 FOLD NOTEBOOK WITH METAL PEN



Product Code : Q 160



- Stealth 3 fold A5 notebook with Long metal edge
- Premium Looks make it stand out
- Strong magnetic flap for secure closure
- Beautiful Metal Body Pen
- Comes with personal memorandum and planner

# COMPACT 4 PC CORK GIFT SET

CORK A5 NOTEBOOK, CORK BARREL PEN,  
METAL CORK KEYCHAIN, CORK CARD HOLDER

Product Code : Q 185



RECTANGLE HANGING  
METAL KEYCHAIN



ECO FRIENDLY  
CARD HOLDER



CORK BARREL  
PEN



CORK ECO FRIENDLY  
A5 NOTEBOOK

# A5 NOTEBOOK AND LOOP METAL PEN



HARD BOUND COVER

160 INNER PAGES  
80GSM



4 IN 1 TEXTURED PU NOTEBOOK IN A5 SIZE  
HARD BOUND COVER LOOKS PREMIUM  
COMES WITH SPACIOUS FRONT POCKET TO HOLD MOBILE, MONEY, CARDS & MORE



BEAUTIFUL METAL BODY PEN  
EXTRA SMOOTH REFILL

Product Code - Q 126



Product Code : Q 119

# 3 PC TRAVEL SET

MINI PASSPORT HOLDER  
WITH SIM CARD BOX, PEN AND TAG



Passport Holder



Net pockets to keep track of things inside



Currency Pocket

Store up to 3 cards



Sim card tray can be used while closed or open





## 4 IN 1 SET

INCLUDING NOTE BOOK,  
PEN, VISITING CARD HOLDER  
AND KEYCHAIN

- Contains A6 size notebook, Visiting card holder, pen, keychain
- Contains total 176 writing pages
- Has a section with personal memorandum, planner & bookmark ribbon etc



Note Book



Pen



Keychain



Visiting Card Holder

Product Code : Q 120



**PACKING IN GIFT BOX**



Product Code : Q 121

## COMPACT 4 PC GIFT SET

WITH A5 SIZE NOTEBOOK, METAL PEN, METAL PU KEYCHAIN, METAL CARD HOLDER



A5 NOTEBOOK



VISITING CARD  
HOLDER



KEYCHAIN



PEN

# COMPACT 4 PC GIFT SET

WITH A5 SIZE NOTEBOOK, METAL PEN,  
METAL PU KEYCHAIN, METAL CARD HOLDER



Product Code : Q 123 A



A5 NOTEBOOK



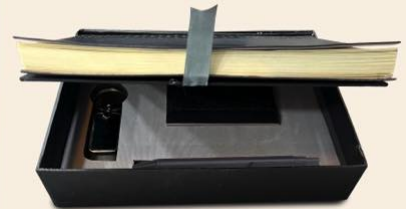
VISITING CARD  
HOLDER



KEYCHAIN



PEN



POWER **PLUS**

# CORK A5 NOTEBOOK WITH BAMBOO / CORK PEN



Available 2 Pen Options



A

BAMBOO PEN



B

CORK PEN

Product Code : Q 124

# Clear Sip Duo

DOUBLE WALL  
BOROSILICATE BOTTLE  
WITH SS INFUSER NET

SEPARATE INFUSER GLASS BASKET

Product Code : H 372

- Made with high-grade double-wall borosilicate glass for durability
- Precision stainless-steel mesh infuser for clean tea, herbs, or fruit blends
- Separate glass basket for better infusion control (hot & cold brew)
- 100% BPA-free and lead-free materials
- Elegant reinforced grip belt for secure, comfortable handling
- Sweat-free double-wall insulation for easy holding

CAPACITY: 325ML APPROX





CAPACITY: 375ML APPROX

# ClearSip Pop

DOUBLE WALL  
BOROSILICATE BOTTLE  
WITH SS INFUSER NET  
**SINGLE CLICK LID RELEASE**

Product Code : H 373



Single button lid release mechanism for effortless, one handed operation

- Double Wall Borosilicate: Keeps drinks hot or cold, comfortable to hold.
- 100% BPA & Lead free composition, ensuring a pristine & uncompromised drink
- Sleek stainless steel infuser, designed for effortless tea and detox infusion
- Streamlined carry belt, crafted for understated comfort and daily ease
- 375 ml capacity, perfect for modern, mindful hydration



HIGH QUALITY  
BOROSILICATE  
GLASS





Capacity : 750 ml (approx)

YOUR LOGO

BRANDING  
AREA



DOUBLE  
WALL



LEAK  
PROOF



BPA  
FREE



KEEPS  
HOT/COLD  
FOR 4-6 HOURS

# Ribb

## INSULATED STEEL BOTTLE

### WITH FLIP TOP LID

Product Code : H 361

- Stainless steel bottle with PU Insulated outer body
- Works like a flask, keeps your drink hot / cold for 4-6 hours
- Durable & Light Weight
- Made from high-quality Stainless steel
- Electropolished inside to increase durability and to make the bottle bacteria resistant
- Makes the bottle stay fresh with no odors
- Strap for carrying easily



Strap for  
carrying  
easily



STAINLESS STEEL INSIDE

# Zippy Trio

## LUNCH BAG

WITH 2 SS ROUND & 1 LONG CONTAINERS

Product Code : H 364

- 2 SS round containers & 1 SS long container ideal for quick, on-the-go meals
- Compact & lightweight, Fits easily in any bag
- BPA-free, safe and healthy
- Great for festive, home, or office gifting

**3** STAINLESS  
STEEL CONTAINERS



**BPA  
FREE**



**LEAK  
PROOF**



**AIR TIGHT  
LIDS**



**EASY TO  
CARRY**



**HOT & COLD**  
**6-8 HOURS**



Capacity 510 ml. approx

**304 GRADE**  
**STAINLESS STEEL** inside

# CAFÉ BUDDY PRO

**STAINLESS STEEL VACUUM COFFEE MUG**  
**WITH SILICON GRIP & TEMPERATURE DISPLAY**

Product Code : H 365



**304**  
**STEEL**



**DOUBLE**  
**WALL**



**BPA**  
**FREE**



**LEAK**  
**PROOF**

- Large Double wall vacuum mug with temperature display
- Flip top cap allows for easy drinking anywhere, anytime
- Made of 304 grade steel
- Vacuumized design keeps the beverage hot for 6 to 8 hrs
- Double wall protects your hands from burning by hot liquids inside



# TokuBox split

PU INSULATED SLIM SS LUNCH BOX

Product Code : H 357



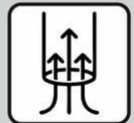
- Sleek and stylish design, perfect for people on the go
- Large size with 2 stainless steel compartments to keep meals separate and fresh
- Leakproof and airtight seal prevents spills and mess
- Ideal for school, office, travel, or outdoor adventures
- PU insulation keeps your food hot for hours
- Comes with a spoon included
- Always ready for a meal anytime, anywhere



**BPA  
FREE**



**LEAK  
PROOF**



**AIR TIGHT  
LIDS**



- Superior quality ensures it can withstand high boiling temperatures easily
- Silicon sleeve keeps the bottle safe from bumps and breakage
- Easy to use, carry and store

CAPACITY  
600ML APPROX

# Clearsip Wrap

**BOROSILICATE BOTTLE**

WITH BAMBOO CAP AND SILICON SLEEVE



Product Code : H 351

*Clearsip*  
*Ecowrap*

# BOROSILICATE BOTTLE

WITH BAMBOO CAP AND CORK SLEEVE

Product Code: H 352



600 ml  
capacity (approx)

- 100% Borosilicate glass bottle with Protective Cork Sleeve
- Eco-friendly and much better than traditional glass bottles
- Superior quality ensures it can withstand high boiling temperatures easily
- Bamboo cap for a beautiful finish
- Protective sleeve keeps the bottle safe from bumps and breakage
- Easy to use, carry and store





Capacity 750 ml. approx.



# Square eco

## INSULATED STEEL BOTTLE

Product Code : H 334

- Stainless steel bottle with PU Insulated Eco Friendly outer body
- Fresh Square shape with Grooves looks beautiful
- Durable & Light Weight
- Made from high-quality Stainless steel with rice husk and wheat fiber
- Electropolished inside to increase durability and to make the bottle bacteria resistant
- Makes the bottle stay fresh with no odors



Silicon strap for carrying easily



KEEPS  
HOT / COLD  
FOR  
4-6 HOURS



DOUBLE  
WALL



LEAK  
PROOF



BPA  
FREE



STAINLESS STEEL INSIDE





Capacity : 1000 ml (approx)

Product Code : H 325

# CLEAR SIP 1000

# BOROSILICATE GLASS BOTTLE

- 100% Borosilicate Glass Bottle
- Highest quality material used
- Non-Toxic, free of harmful metals
- 100% BPA & Lead free
- 100% Microwave Safe
- Eco-friendly and much better than traditional glass bottles
- Safest way to store water and other beverages
- Keeps the contents pure and free from contamination
- Superior quality ensures it can withstand high boiling temperatures easily
- Huge capacity, 850 ml (approx) to get you through the day
- Stainless steel fused cap for a beautiful finish



BETTER THAN REGULAR GLASS BOTTLES  
**BEST QUALITY GLASS**



# DURAMUG *Grip*

## LARGE SPILL PROOF

### SUCTION MUG



Capacity:  
460ml approx

Product Code : H 316



DOUBLE  
WALL



BPA  
FREE



LEAK  
PROOF



STAINLESS  
STEEL  
INSIDE

Magic suction feature  
ensures spill free design



Elegant design,  
made of  
**100% Stainless Steel**  
Inside



Spill-proof  
suction  
mechanism to  
prevent  
accidental spills





Capacity 750 ml. approx.



DOUBLE  
WALL



BPA  
FREE



LEAK  
PROOF



# *Square II* **INSULATED STEEL BOTTLE**

Product Code : H 318

- Stainless steel bottle with PU Insulated outer body
- Fresh Square shape with Grooves looks beautiful
- Works like a flask, keeps your drink hot / cold for 4-6 hours
- Durable & Light Weight
- Made from high-quality Stainless steel
- Electropolished inside to increase durability and to make the bottle bacteria resistant
- Makes the bottle stay fresh with no odors
- Silicon strap for carrying easily
- Sturdy construction



**KEEPS HOT / COLD  
FOR 4-6 HOURS**



Capacity: 750 ml. approx.

# HEXA EDGE INSULATED STEEL BOTTLE



Product Code :  
H 319



**KEEPS HOT/COLD  
FOR 4-6 HOURS**



**LEAK  
PROOF**



**BPA  
FREE**



**DOUBLE  
WALL**

Available in 2 Color Combinations



- **Stainless Steel Bottle** with **PU Insulated Outer Body**
- **Fresh Hexagon shape** looks beautiful
- Works like a flask, keeps your **Drink Hot / Cold for 4-6 hours**
- Made from **high-quality Stainless steel**
- **Durable & Light Weight**
- **Electropolished inside** to increase durability and to make the **Bottle Bacteria Resistant**
- **Silicon Strap for Carrying Easily**

# BULLET VACUUM FLASK

Product Code : H 299

- Beautiful bullet vacuum flask  
Double wall stainless steel vacuum insulation with food grade 304 stainless steel inside
- Rinse with hot/cold water before filling with hot/cold liquids for increased temperature retention
- Lid acts as a handy cup while travelling

Capacity:  
**500ml** (approx)



**HOT & COLD  
08-10 HOURS**



POWER **PLUS**

# Dura MUG

**SPILL PROOF SUCTION MUG  
WITH OVAL HANDLE**



**DOUBLE  
WALL**



**BPA  
FREE**



**LEAK  
PROOF**



**STAINLESS  
STEEL  
INSIDE**



Elegant design,  
made of  
**100%  
Stainless  
Steel  
inside**

**STAINLESS STEEL** inside



Magic suction feature  
ensures spill free design



Spill-proof  
suction  
mechanism  
to prevent  
accidental  
spills

Product Code :  
H 301

POWER PLUS



# CAFÉ MATE PRO

STAINLESS STEEL VACUUM COFFEE MUG  
WITH TEMPERATURE DISPLAY



HOT & COLD  
6-8 HOURS

PREMIUM FLIP TOP  
LOCKING CAP

DOUBLE WALL PROTECTS YOUR  
HANDS FROM BURNING BY  
HOT LIQUIDS INSIDE

COMES WITH A CAP  
TO STORE YOUR DRINK FOR LATER

DOUBLE WALL MUG MADE OF  
STAINLESS STEEL INSIDE

Capacity 510 ml. approx



DOUBLE  
WALL



BPA  
FREE



LEAK  
PROOF

304 GRADE  
STAINLESS STEEL inside

Product Code : H 278

# SUNSET+ MUG

## MAGIC SUCTION

### STAINLESS STEEL INSIDE

Product Code : H 280



COMES WITH A LID  
TO STORE YOUR  
DRINK FOR LATER

POWER PLUS



BPA  
FREE



DOUBLE  
WALL



LEAK  
PROOF

- High quality stainless steel double wall mug
- Mirror finish stainless steel inside for longer life



MAGIC SUCTION  
FEATURE ENSURES  
SPILL FREE DESIGN



MUG DOESN'T FALL OFF WITH  
ACCIDENTAL PUSHES, BUT CAN  
BE LIFTED EASILY STRAIGHT UP



Capacity **750 ml.** approx.

POWER **PLUS**

# Square

## INSULATED STEEL BOTTLE

- Stainless Steel inside & food safe plastic outside
- Bottle has silicon strap to hold and carry easily
- Bottle Keeps liquid hot / cold for 4-6 hours



BOTTLE HAS  
SILICON STRAP  
TO HOLD  
AND CARRY EASILY



**STAINLESS STEEL** inside



**HOT & COLD**  
4-6 HOURS



**AMAZINGLY**  
LIGHT WEIGHT



**STAY FRESH**  
NO ODOURS



**SPILL &**  
LEAK PROOF

Product Code  
H 268

**POWER PLUS**

Capacity 510 ml. approx

**SILICON GRIP**

# CAFÉ BUDDY

## STAINLESS STEEL

### VACUUM COFFEE MUG

Elegant design,  
made of  
**100%**  
stainless steel

Double wall protects your  
hands from burning by hot liquids inside

Double wall mug made of  
stainless steel inside



**304 GRADE**  
**STAINLESS STEEL** inside

2  
DOUBLE  
WALL

BPA  
FREE

LEAK  
PROOF

HOT & COLD  
6-8 HOURS

Product Code  
H 274

POWER PLUS

# CAFÉ MATE

## STAINLESS STEEL

### VACUUM COFFEE MUG

Double wall protects your hands from burning by hot liquids inside

Double wall mug made of stainless steel inside



Capacity 380 ml. approx

Product Code : H 276



Elegant design,  
made of  
**100%**  
stainless steel

Slim construction to  
fit inside car holders easily



LEAK  
PROOF



BPA  
FREE



DOUBLE  
WALL



304  
STEEL



HOT & COLD  
6-8 HOURS



PREMIUM FLIP TOP LOCKING CAP

304 GRADE  
STAINLESS STEEL

**POWER PLUS**

# HEXA INSULATED TALL SIPPER MUG



KEEPS  
HOT & COLD  
4-6 HOURS

Capacity 375 ml, approx.



ANTI  
RUST



DOUBLE  
WALL



LEAK  
PROOF

Mug's double wall also prevents cold liquids temperature increase by body heat



BPA  
FREE

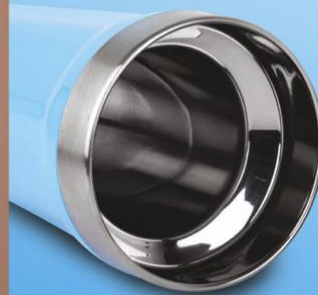


304  
STEEL

Double wall protects your hands from burning by hot liquids inside



Double wall mug made of 304 grade food-safe stainless steel inside



Comes with a cap to store your drink for later

Product Code : H 254

**304 GRADE  
STAINLESS STEEL** inside



# Candy

## INSULATED STEEL BOTTLE

IN MATTE FINISH



Bottle has  
silicon strap  
to hold and  
carry easily

**POWER PLUS**

- Stainless steel bottle with PU Insulated matte finish outer body
- Bottle has silicon strap to hold and carry easily
- Bottle keeps liquid hot / cold for 4-6 hours

**STAINLESS STEEL** inside

Product Code : H 248 A



Capacity 750 ml. approx.



**HOT & COLD  
4-6 HOURS**



**AMAZINGLY  
LIGHT WEIGHT**



**SPILL &  
LEAK PROOF**

# MEGA LUNCH

# 3

## Foodgrade Lunch Box

**POWER PLUS**



### Product Features

- 3 Food Grade Stainless steel Containers with Lifter
- Keeps Food Warm For Long Time.
- It comes with a detachable carry strap

### 3 STAINLESS STEEL CONTAINERS



COLORS AVAILABLE



Product Code : H 225

**HALF TURN  
LOCKING MECHANISM**

# TALL SIPPER MUG



Product Code : H 223



Double wall mug made of 304 grade food-safe stainless steel inside



Capacity 375 ml. approx.

Double wall protects your hands from burning by hot liquids inside

Mug's double wall also prevents cold liquids' temperature increase by body heat

**304 GRADE STAINLESS STEEL** inside

Comes with a cap to store your drink for later with flip-top drinking vent protector



# OCTOMEAL ECO

Lunch Box 3 Container - H 196  
Made of Eco Friendly Wheat Fiber

WE'VE GONE GREEN | Introducing  
**GREEN** ECO LUNCH BOX



Made of Wheat Fiber & Food Safe PP Material

## POWER PLUS

- Made with Wheat Fiber, Premium Quality Material
- 3 Food Grade Plastic Containers With Tight Lids
- Stainless steel spoon included in handle



Keeps Food Warm  
For Long Time



Eco Friendly



Leak proof  
Containers

Easy Carry Handle  
With Spoon Inside



Premium Finish Spill Proof and Leak Proof



Capacity: 400 ml (approx)

# BAMBOO VACUUM FLASK

## WITH TEA STRAINER

Product Code : H 191 A



INSIDE WITH  
NATURAL  
BAMBOO OUTSIDE



Hot / Cold



BPA  
FREE



LEAK  
PROOF

Tea strainer allows for  
both hot and cold  
detox tea brews



# Bento Travel

## LUNCH BOX

### WITH 3 PLASTIC CONTAINERS

Product Code : H 154



**Moveable Handle**  
Easy to Carry

**Press Lock**  
Mechanism Containers

#### SPECIFICATIONS OF CONTAINERS



REFRIGERATOR  
FRIENDLY



REUSABLE



FOOD  
GRADE

- Stylish multi-compartment lunch box with modern design
- Includes separate containers for organized meal storage
- Leak-resistant lids to prevent spills and mess
- Durable, high-quality food-grade material
- Compact and portable with sturdy carry handle
- Ideal for office, school, or travel use
- Keeps food fresh and well-separated
- Easy to clean and maintain
- Space-saving stackable design
- Perfect for carrying complete meals in one box

# OCTOMEAL LUNCH BOX

Product Code : H 86

3

FOOD GRADE  
PLASTIC CONTAINERS



- Premium insulated lunch box with modern, stylish design
- Keeps food hot and fresh for long hours
- Durable outer body with strong carry handle with Spoon Encloser
- Comes with stainless steel containers for safe and hygienic storage
- Leak-resistant lid to prevent spills during travel
- Compact and space-saving – ideal for office, school, or travel use

# OCTOMEAL LUNCH BOX

Product Code : H 87

**3** STAINLESS  
STEEL CONTAINERS



- Premium insulated lunch box with modern, stylish design
- Keeps food hot and fresh for long hours
- Durable outer body with strong carry handle with Spoon Encloser
- Comes with stainless steel containers for safe and hygienic storage
- Stainless steel lifter included for ease of use
- Compact and space-saving – ideal for office, school, or travel use

# WOODEN PLAQUE WITH GOLDEN PLATE HANGING & STANDING DESIGN



Product Code : F 18



CAN BE  
MOUNTED ON THE WALL

- Wooden Plaque with golden plate
- Can be used in both Portrait or Landscape mode on table
- Size 9 x 11inches
- Perfect for events and ceremonies



Can be used as  
a table top both  
vertically &  
horizontally

All trademarks are property of their respective owners. Shown here for demo purpose only



Product Code : E 410

# STANDEASE XL

ANGLE & HEIGHT ADJUSTABLE MULTIPURPOSE STAND

LARGE SIZE SUITABLE FOR MOBILE & TABLETS

ROTATING HEAVY METAL BASE



**Adjustable:** Dual-axis height adjustment with 360° rotating base for perfect viewing angles.

**Foldable:** Compact, pocket-friendly design for easy travel and storage.



**Excellent Stability:** Anti-slip rubber base ensures strong grip and prevents scratches.

**Durable:** Metal base for long-lasting strength.



# Brighto Square

## RECHARGEABLE LED LAMP WITH MOBILE STAND



3 COLOR  
LIGHT OPTION



TYPE C  
CHARGING



2400 mAh RECHARGEABLE  
BATTERY



FREE BENDING  
LAMP NECK



TOUCH SENSOR  
BUTTON



OVER CHARGING  
PROTECTION

Product Code : E 396



MOBILE  
STAND

# TAPLITE Clippy

RECHARGEABLE LED LAMP  
WITH CLIP-ON BASE



SPECTRUM EYE  
PROTECTION  
IR 99 LED

Product Code : E 397



3 COLOR  
LIGHT OPTION



TOUCH SENSOR  
BUTTON



TYPE C  
CHARGING



ADJUSTABLE  
BRIGHTNESS



FREE BENDING  
LAMP NECK



1200 mAh  
RECHARGEABLE  
BATTERY



EASILY ATTACHES TO TABLES AND SURFACES



# PEN ZEN SPHERE

## RECHARGEABLE LAMP

### with TUMBLER & PHONE STAND

Product Code : E 382E



1200 mAh  
RECHARGEABLE  
BATTERY



3 COLOR  
LIGHT OPTION



RECHARGEABLE  
BATTERY



TYPE C  
CHARGING



TOUCH SENSOR  
BUTTON



OVER CHARGING  
PROTECTION



FREE BENDING  
LAMP NECK

- Rechargeable battery for convenience and reliability
- Feather-touch power button for easy on/off
- 3 modes light to adjust brightness
- Fine-tune brightness levels with a long press
- Flexible neck design for adjustable lighting position
- C-Type cable included
- Multi-functional as a smartphone holder and stationery holder



# HARD SHELL TRAVEL ORGANIZER WITH WATER RESISTANT BODY

SUITABLE FOR GADGETS & DELICATE ITEMS

Product Code : E 385



MULTIPLE  
POCKETS  
INSIDE



LIGHT WEIGHT  
&  
EASY TO CARRY



DURABLE  
HARD SHELL



SOFT  
LINING



ELASTIC  
FASTENERS

## Hard Shell Travel Organizer

Durable Hard Shell is Unbreakable during regular use

Shock-absorbing and water-resistant

Multiple pockets for organized storage

Lightweight and easy-to-carry

Additional loop for convenient carrying

Keeps belongings secure while on the move

## USE TO ORGANIZE YOUR:



GADGETS



COSMETICS



KEYS



TOILETRIES



MEDICINE

# TapLite Dome

## RECHARGEABLE LED LAMP

Product Code : E 387



3 COLOR  
LIGHT OPTION



1200 mAh RECHARGEABLE  
BATTERY



FREE BENDING  
LAMP NECK



TYPE C  
CHARGING



TOUCH SENSOR  
BUTTON



OVER CHARGING  
PROTECTION



- Rechargeable battery for convenience and reliability
- Feather-touch power button for easy on/off
- 3 modes light to adjust brightness
- Fine-tune brightness levels with a long press
- Flexible neck design for adjustable lighting position
- C-Type cable included

# PEN ZEN SPHERE

## RECHARGEABLE LAMP

### with TUMBLER & PHONE STAND

Product Code : E 382



2400 mAh  
RECHARGEABLE  
BATTERY



3 COLOR  
LIGHT OPTION



RECHARGEABLE  
BATTERY



TYPE C  
CHARGING



TOUCH SENSOR  
BUTTON



OVER CHARGING  
PROTECTION



FREE BENDING  
LAMP NECK

- Rechargeable battery for convenience and reliability
- Feather-touch power button for easy on/off
- 3 modes light to adjust brightness
- Fine-tune brightness levels with a long press
- Flexible neck design for adjustable lighting position
- C-Type cable included
- Multi-functional as a smartphone holder and stationery holder





RECHARGEABLE  
BATTERY



CHARGING CABLE  
INCLUDED



SIDE LAMP



SLIDE  
SWITCH

# HANDYBEAM

## RECHARGEABLE TORCH

# WITH SIDE LAMP

- Side lamp for added functionality
- Micro USB input charging with included charging cable
- Charging Indicator LED turns Red while charging, and turns Green when Fully Charged
- Long-lasting lithium battery



LITHIUM-ION BATTERY

Product Code  
E 367



# HANDYBEAM *Tango*

## RECHARGEABLE TORCH WITH SIDE LAMP



LITHIUM-ION BATTERY

HANDYBEAM SERIES

- HandyBeam Tango Rechargeable Torch with Side Lamp
- Side lamp for added functionality
- Type C input charging with included charging cable
- Long-lasting lithium battery
- Easy slide switch for effortless operation
- Ideal for a variety of tasks
- Perfect lighting solution for any situation



Product Code : E 368



RECHARGEABLE  
BATTERY



CHARGING CABLE  
INCLUDED



TYPE C  
CHARGING



SIDE LAMP



MAKE IN INDIA

# HANDYBEAM *Groove*

## RECHARGEABLE TORCH

WITH SIDE LAMP | CHARGING CABLE INCLUDED



HANDYBEAM SERIES

- HandyBeam Groove Rechargeable Torch with Side Lamp
- Side lamp for added functionality
- Type C input charging with included charging cable
- Long-lasting lithium battery
- Easy slide switch for effortless operation
- Ideal for a variety of tasks
- Perfect lighting solution for any situation

Product Code  
E 369

**LITHIUM-ION BATTERY**



RECHARGEABLE  
BATTERY



CHARGING CABLE  
INCLUDED



TYPE C  
CHARGING



SIDE LAMP





RECHARGEABLE  
BATTERY



CHARGING CABLE  
INCLUDED



SIDE LAMP



SLIDE  
SWITCH

# HANDYBEAM *Sonic*

## RECHARGEABLE TORCH WITH SIDE LAMP

Product Code : E366

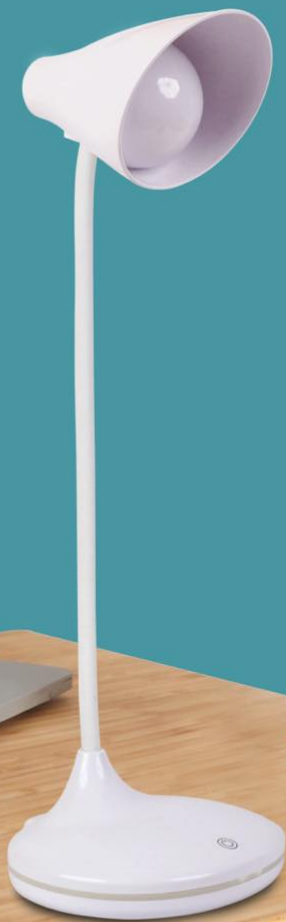
- HandyBeam Sonic Rechargeable Torch with Side Lamp
- Side lamp for added functionality
- Type C input charging with included charging cable
- Long-lasting lithium battery
- Charging Indicator LED turns Red while charging, and turns Green when Fully Charged
- Easy slide switch for effortless operation
- Ideal for a variety of tasks



LITHIUM-ION BATTERY



HANDYBEAM SERIES



- Easy switching between light colors with a single touch
- Flexible neck design for adjustable lighting position
- Fine-tune brightness level with a long press
- C-Type cable included
- Type C charging input makes it convenient and future proof
- Sleek and modern lighting solution for home or office

# BRIGHTO 2.0

---

## RECHARGEABLE LED LAMP

---

Product Code : E 353



3 COLOR  
LIGHT OPTION

---



FREE BENDING  
LAMP NECK

---



1200 mAh RECHARGEABLE  
BATTERY

---



TOUCH SENSOR  
BUTTON

---



TYPE C  
CHARGING



OVER CHARGING  
PROTECTION



- Feather touch button
- Works for 3-5 hours after a full charge
- Fine-tune brightness levels with a long press
- 3 color light option with adjustable brightness
- Type C charging input makes it convenient and future proof
- C-Type cable included
- Sleek and modern design
- Ideal for home or office use

Product Code :E 354

# TapLite

## RECHARGEABLE LED LAMP



3 COLOR  
LIGHT OPTION



FREE BENDING  
LAMP NECK



1200 mAh RECHARGEABLE  
BATTERY



TOUCH SENSOR  
BUTTON



TYPE C  
CHARGING



OVER CHARGING  
PROTECTION



# BRIGHTO SHINE

RECHARGEABLE LED LAMP

Product Code : E 356



1200 mAh  
RECHARGEABLE  
BATTERY



TYPE C  
CHARGING

- Brighto Shine Rechargeable LED lamp
- 3 color light option
- Adjustable brightness settings
- Effortlessly switch between colors with a single press
- Fine-tune brightness levels with a long press
- C-Type cable included
- Modern elegance for any space
- Stylish and functional design



3 COLOR LIGHT OPTION



TOUCH SENSOR BUTTON

# RECHARGEABLE

## TORCH WITH FOLDING LAMP

POWER **PLUS**

Product Code : E 335



1200 mAh  
RECHARGEABLE



FOLDABLE



OVERCHARGE  
PROTECTION  
FUNCTION



TYPE C USB  
SOCKET FOR  
CHARGING



TYPE C USB SOCKET FOR CHARGING



LITHIUM-ION BATTERY



**POWER PLUS**

- Rechargeable table lamp with phone stand
- Easy to use phone stand
- Bright LED light with long life
- Separate On/Off switch at the back
- Built-in Rechargeable battery
- Works for 3-5 hours after a full charge

Product Code : E 320

# Swan

## RECHARGEABLE

### FLEXI TABLE LAMP WITH MOBILE STAND

FEATHER TOUCH  
BUTTON

3 STEP DIMMER  
CONTROL

RECHARGEABLE  
TABLE LAMP

ON/OFF  
Button

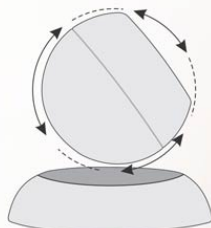
LED LIGHT  
Indicator

MOBILE  
Stand



Flexible Neck

# Magnetic 720 degree Sensor Light with Motion Sensor (with detachable magnetic stand) - E208s



Detachable light can be rotated  
to face any direction

- Round sensor light with auto on/ off function
- Single Button operation, 3 modes: On, Off, Auto
- Built-in Motion and Light sensor to turn on/ off the light automatically
- Can be hung or easily stuck on iron surfaces like, wardrobe, Almira, cabinets etc.
- Long battery life as light turns off automatically after set time, and works only in the dark
- No electricity needed, works on 3xAAA batteries (not included)



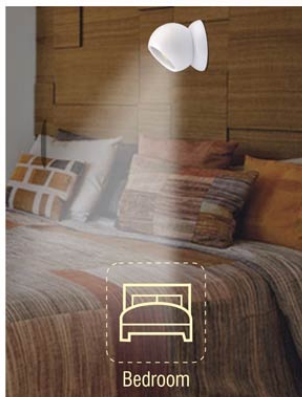
Strong  
Magnetic



Light  
Sensor



Motion  
Sensor



# Dual USB Wall & Car Charger - E 117

(For use at home and on the move)



- AC/DC Charger with circuit level protection for your devices
- Two devices can be charged at the same time
- Compact model;
- Retractable charging pins and plug for car
- Unique design; first of its kind
- No need of separate chargers for home and car



Branding Area



Charge your devices indoor ...  
(up to 2 devices simultaneously)



... Take it with you in the car if  
phone is not charged completely

# HEART STYLE 3D ILLUSION CLOCK - D 28

(WITH DUAL PHOTO FRAME)

**POWER PLUS**™

**1<sup>st</sup>**  
time in  
INDIA



- Beautiful heart design
- Analog clock with 2 photo frames on sides
- Perfect for your loved ones
- Wonderful heart style 3D depth illusion
- Comes in hot red color



Photo Size - 54 x 54 mm

# ZenCharge

## BAMBOO WIRELESS CHARGER

WITH PHONE STAND AND TRIPLE PEN STAND



PEN  
HOLDER



15W WIRELESS  
CHARGER

MOBILE  
STAND

Product Code  
C 206



# Zephyr

## RECHARGEABLE FAN

WITH 3 LEVEL SPEED ADJUSTMENT



- Creates a mini storm of refreshing air
- Just charge the battery and you can enjoy gush of air with this rechargeable USB fan
- 3 speed fan also helps in maximizing battery life
- Single button operation



CHARGING LIGHT  
INDICATOR



3 LEVEL  
SPEED ADJUSTMENT



1200 mAh  
RECHARGEABLE  
BATTERY

MADE  
IN  
INDIA

Product Code : C 197

# POWER STRIP

## WITH USB PORTS & 2 MODE LAMP

2 SOCKETS WITH 2 USB PORTS

100%  
**BRASS**  
CONNECTORS

Product Code : C 186



**SHORT  
CIRCUIT  
PROTECTION**



**OVER  
TEMPERATURE  
PROTECTION**



**OVER  
VOLTAGE  
PROTECTION**

- The Power Strip is a highly efficient, lifestyle enhancing accessory
- It features an integrated design with 2 sockets and 2 USB ports
- The product is made from high-quality materials and includes safety measures
- It is designed for reliability and longevity
- The power strip fulfills tech needs while providing ambient lighting



**POWER PLUS**

**NIGHT LAMP  
MODE**



**2 MODE LAMP DAY / NIGHT**

**STUDY LAMP  
MODE**



# 3.4A Dual USB Home Charger with LED Night Lamp - C 123

POWER **PLUS**



DUAL CHARGING



FAST CHARGING  
UPTO 3.4A



3 LEVEL  
BRIGHTNESS



NIGHT LAMP



Dual USB, Fast Charging



Soft LED Night Lamp  
with Touch Control



3 LEVEL OF BRIGHTNESS

# Folding Metal Laptop Stand

with 7 Angle Adjustment, Compact Folding Design  
With 10 Anti Skid Pads - C 159



It is made up of Aluminium alloy  
and Silicone Rubber pad



Supports Max  
Weight 4 Kg



Just 260 g only



7 Adjustable Height



Support up to  
15.6" Laptops



7 Angle Adjustment



Extremely handy  
to carry in your  
office bag



Fully foldable,  
light weight  
at 260gm only



sitting posture keeping your back straight, neck relaxed



Air Ventilation

Keeps your laptop cooler so the battery life  
and internal components life also improves

# POWER GLOW

## USB Hub with Tumbler & Logo Highlight - C 106

3 USB Ports with Mobile Stand

- 4 side logo highlight! Logo lights up when USB hub is used
- Spacious Tumbler



Mobile Stand



Expand single port into 3

# PERSONAL ORGANIZER WITH CARD & PEN SLOTS

Product Code : B 161



Includes branding  
metal plate for  
customization



- Premium Personal Organizer with Card & Pen Slots
- Crafted from high-quality PU material
- Contains total 236 inner and 210 writing pages
- Has a section with personal memorandum, calendar, etc
- Changeable refill system for convenience and organization

# MULTIFUNCTION MAGIC CLOCK WITH PEN AND MOBILE STAND

Product Code : A 137

INNOVATIVE  
**CLOCK**  
WITH PRACTICAL  
FEATURES

HAS A  
**100 YEARS CALENDAR,**  
WITH **DAY, DATE** AND  
**TEMPERATURE** DISPLAY

SPACIOUS **PEN STAND**  
AND  
**PHONE STAND**

**EYE CATCHING** DESIGN.  
DISPLAY **COLOR** CAN  
BE **CHANGED** BY  
**ROTATING** FRONT PLATE



**Color Changing Display!** Only shows when Front Plate is Attached

FULL SIZE BRANDING AREA ON 3 SIDES AND LOGO SPACE ON FRONT PLATE

# Screen*time*

## TV STYLE CLOCK

WITH CALENDAR, TEMPERATURE & HUMIDITY FUNCTION

Product Code : A 145



Inbuilt alarm



Sound control  
backlight



Powered by 2 x AA batteries

- Clear display of time, calendar, temperature, and humidity
- Inbuilt alarm to never miss important meetings
- Voice activated snooze & back light function also works via hard touch
- Large branding area suitable for corporate gifting



Excellent branding area on the front and sides

All trademarks are property of their respective owners.  
Shown here for demo purpose only

# Night Lamp Clock

with Alarm & Super Sweep Movement - A 125

**POWER PLUS**®



Super sweep second hand movement



3 Level backlight with touch button



No Need of Night Lamp



Level 1



Level 2



Level 3

1,200 mAh  
Rechargeable  
battery  
included  
(for night lamp)

Clock works on  
1xAA battery  
(not included)



Rechargeable battery for night light



Can be used directly through cable as well



**3** Level backlight

# Wooden Lifetime Calendar

with Pen holder, Mobile holder, Card holder  
& Writing Pad holder - A 131



Rotating month dial  
and slider for date/day

- Wooden table top with perpetual calendar
- Has a spacious pen holder, phone holder, card holder, writing pad holder
- Keeps your table organized
- Separate branding plate at the bottom

# SEE THRU CLOCK

WITH TEMPERATURE

CAN BE USED AS WALL OR TABLE CLOCK



CAN BE  
MOUNTED ON THE WALL



LCD DISPLAY OF TIME, MONTH, DATE, DAY, TEMPERATURE

TEMPERATURE IN CELSIUS AND FAHRENHEIT

9 ALARM MUSIC FOR CHOICE

COUNT-DOWN TIMER

100 YEAR CALENDAR

ALARM WITH SNOOZE

EXCLUSIVE SEE THRU DISPLAY

BIRTHDAY REMINDER

BRANDING AREA

Product Code : A 133

## See Thru Table Clock - A 86



### FEATURES

- LCD display of Time, Month, Date, Day, Temperature
- 100 year calendar
- Alarm with snooze
- Temperature in Celsius & Fahrenheit
- Count-down timer
- Exclusive see thru display



# Tumbler with Digital Clock and Temperature - A 92

(unique pyramid design)

- Spacious stationary tumbler
- Unique pyramid style side designing beautifies your desk
- Digital alarm clock with day, date and temperature display
- Excellent branding area



# Sharp Weather Station Clock

With back-lit display- **A 104**



With Back-lit Display



Excellent branding space

- Beautiful clock with sharp edges
- Shows humidity and temperature with picture of sunny, cloudy, rainy, etc.
- Records Min / Max / Current Humidity and Temperature
- Display Temperature in Celsius or Fahrenheit
- Excellent branding area on the front and sides



Easy backlight with Alarm snooze button